

# PRODUCT SPECIFICATIONS

## Hydra-Tapper Line Tapping System — Hydraulic Drive Motor

### Scope:

This specification covers the furnishing, complete of one (1) new Hydra-Tapper System with hydraulic drive.

### Equipment Capability:

The equipment shall be capable of making new pressure taps in the range of four-inch (4) diameter through twelve-inch (12) diameter. This equipment shall be rated for line pressures up to 250 psi and have the following capabilities:

- Expansion to a double set of line stopping equipment without factory rework.
- Expansion to line stopping to be rated to line pressures up to 150 psi or 250 psi.
- Expansion to valve installation 4"–12" with additional adapter kit.

The capabilities specified herein are minimum mandatory requirements that must be met by any equipment offered. Equipment shall be manufactured by Hydra-Stop. No substitutions will be allowed.

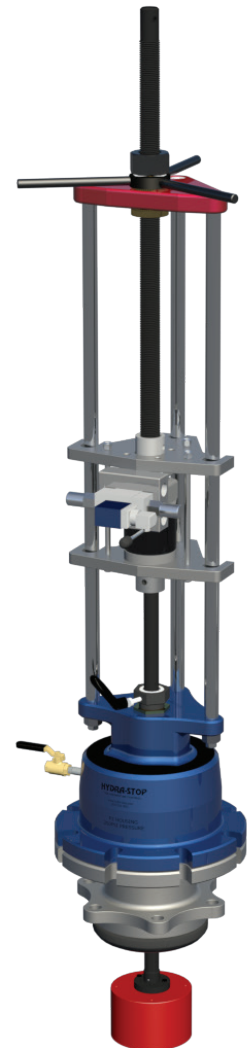
### 4"–12" Line Tapping Equipment:

Manufacturer Part# 3-1300-4121

#### **Tapping (Drilling) Equipment:**

<u>Quantity</u>	<u>Description</u>
1 each	Tapping (Drilling) Machine: 4"–12"
1 each	Drive Motor: Hydraulic
1 each	Shell Cutter: Carbide tooth in 4", 6", 8", 10", and 12" (5 total)
1 each	Pilot Drill: 4"–6", 8", and 10"–12" (3 total)
1 each	Saw Mandrel: 4"–8" and 10"–12" (2 total)
1 each	MJ Tapping Adapter: 4"–12" (5 total)

**NOTE:** Side tapping expansion kit is required for branch connections.



# PRODUCT SPECIFICATIONS

## Hydra-Tapper Line Tapping System — Hydraulic Drive Motor

### **Equipment:**

The size and weights of each (4"–12") Hydra-Tapper Unit shall be such that two (2) workmen can assemble the machinery and manually transport it over a fairly level construction site without the use of hoisting equipment. Once lowered into an excavation, two (2) workmen can mount the machinery onto the tapping valve without further hoisting assistance. All requirements expressed as mandatory in this paragraph and all requirements expressed as mandatory in all of the subparagraphs of this section, i.e., as requirements that "shall" be met, are minimum mandatory requirements that must be met by any equipment offered.

### **Delivery:**

Delivery is required within 30 days after receipt of the purchase order. Failure to meet this delivery date may be deemed as non-responsive. Freight allowed.

### **Warranty:**

The manufacturer shall supply a one-year warranty on defective materials. Cutters and pilot drills shall be excluded from this warranty.

### **Training:**

A qualified representative of the manufacturer shall provide sixteen (16) hours of demonstration and training in the use of the equipment specified. All cost for this training will be included in the prices bid for the equipment.

