

# INSTA-VALVE 250 **SUCCESS STORY**

*Minimizing Disruption and Maximizing Continuity During an Emergency Valve Installation*  
**Large City in North Carolina**

## **THE CHALLENGE**

In July 2025, a large North Carolina city was faced with a critical infrastructure repair on a 12-inch water main running along an essential roadway servicing both commercial and residential areas. The section of the line required urgent repair, but the stakes were high: a complete shutdown would have resulted in water loss for two major businesses as well as a large multi-resident housing neighborhood.

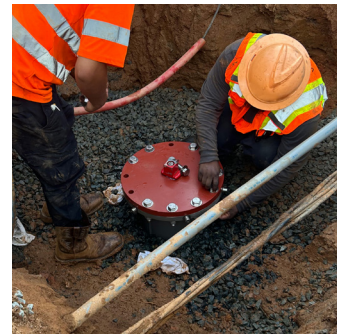
The risk of widespread service disruption posed serious consequences for local commerce and daily life. The utility needed a solution that would allow them to isolate the repair site without interrupting service to their key customers.

## **THE SOLUTION**

To maintain service while addressing the damaged main, the utility installed a 12" Hydra-Stop Insta-Valve 250. This no-shutdown valve was the ideal solution to isolate the affected line section quickly and safely.

Once the site was prepped—including trenching and shoring—the valve installation itself took only 2.5 hours to complete. The efficient process ensured minimal impact to the area, and most importantly, no interruption in water service to nearby businesses or residents.

Thanks to the Insta-Valve 250's in-line installation capabilities, the city avoided issuing any boil advisories, emergency notices, or alternative water routing—all while safely conducting the necessary line repair under live system conditions.



## **PROJECT IMPACT**

The successful installation of the 12" Insta-Valve 250 enabled the utility to carry out vital infrastructure repairs with zero disruption to commercial and residential water users. Businesses continued their operations uninterrupted, and residents experienced no change in water service or quality.

By deploying Hydra-Stop's no-shutdown technology, the city demonstrated a proactive, efficient, and customer-focused approach to utility management. The project not only preserved public confidence but also set a high standard for future emergency repairs in densely populated areas.

*The Insta-Valve 250 allowed us to complete the repair quickly and efficiently without disrupting service to our commercial or residential customers—an ideal outcome for such a critical location.*

— Senior Engineer, Field Operations