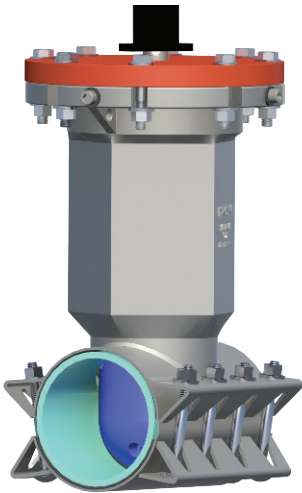


How to purchase the Insta-Valve 250 Patriot Insertion Valve

1. Select the IV 250 Valve Body which meets your requirements. (Based on O.D. of pipe.)
2. Select the IV 250 Valve Cartridge which meets your requirements. (Based on I.D. of pipe and open left or open right.)
3. Select optional Domestic Stainless Steel Bonnet Flange if required.
4. Select optional 4-8" or 10-12" Post Hole Indicator Kit, if required.
5. Select optional Domestic Hardware if required.
6. **Place your order.**

START HERE ->

Step 1) Select the Insta-Valve 250 Patriot Valve Body which meets your requirements. (Based on O.D. of pipe.)



Nominal Size	Valve Body OD Range	HS Part Number	Description	List Price
4"	4.35-4.65	25450250-CS	IV 250 4.50" Valve Body, Carbon Steel Flange, 304 Hardware	CALL
	4.65-4.95	25480250-CS	IV 250 4.80" Valve Body, Carbon Steel Flange, 304 Hardware	CALL
	4.98-5.28	25513250-CS	IV 250 5.13" Valve Body, Carbon Steel Flange, 304 Hardware	CALL
	5.07-5.37	25522250-CS	IV 250 5.22" Valve Body, Carbon Steel Flange, 304 Hardware	CALL
	5.35-5.65	25550250-CS	IV 250 5.50" Valve Body, Carbon Steel Flange, 304 Hardware	CALL
6"	6.48-6.78	25663250-CS	IV 250 6.63" Valve Body, Carbon Steel Flange, 304 Hardware	CALL
	6.75-7.05	25690250-CS	IV 250 6.90" Valve Body, Carbon Steel Flange, 304 Hardware	CALL
	7.05-7.35	25720250-CS	IV 250 7.20" Valve Body, Carbon Steel Flange, 304 Hardware	CALL
	7.21-7.51	25736250-CS	IV 250 7.36" Valve Body, Carbon Steel Flange, 304 Hardware	CALL
	7.35-7.65	25750250-CS	IV 250 7.50" Valve Body, Carbon Steel Flange, 304 Hardware	CALL
8"	8.48-8.78	25863250-CS	IV 250 8.63" Valve Body, Carbon Steel Flange, 304 Hardware	CALL
	8.90-9.20	25905250-CS	IV 250 9.05" Valve Body, Carbon Steel Flange, 304 Hardware	CALL
	9.17-9.47	25932250-CS	IV 250 9.32" Valve Body, Carbon Steel Flange, 304 Hardware	CALL
	9.35-9.65	25950250-CS	IV 250 9.50" Valve Body, Carbon Steel Flange, 304 Hardware	CALL
	9.55-9.85	25970250-CS	IV 250 9.70" Valve Body, Carbon Steel Flange, 304 Hardware	CALL
10"	10.60-10.90	251075250-CS	IV 250 10.75" Valve Body, Carbon Steel Flange, 304 Hardware	CALL
	10.95-11.25	251110250-CS	IV 250 11.10" Valve Body, Carbon Steel Flange, 304 Hardware	CALL
	11.15-11.45	251130250-CS	IV 250 11.30" Valve Body, Carbon Steel Flange, 304 Hardware	CALL
	11.35-11.65	251150250-CS	IV 250 11.50" Valve Body, Carbon Steel Flange, 304 Hardware	CALL
	11.85-12.15	251200250-CS	IV 250 12.00" Valve Body, Carbon Steel Flange, 304 Hardware	CALL
12"	12.60-12.90	251275250-CS	IV 250 12.75" Valve Body, Carbon Steel Flange, 304 Hardware	CALL
	13.05-13.35	251320250-CS	IV 250 13.20" Valve Body, Carbon Steel Flange, 304 Hardware	CALL
	13.35-13.65	251350250-CS	IV 250 13.50" Valve Body, Carbon Steel Flange, 304 Hardware	CALL
	13.60-13.90	251375250-CS	IV 250 13.75" Valve Body, Carbon Steel Flange, 304 Hardware	CALL
	14.05-14.35	251420250-CS	IV 250 14.20" Valve Body, Carbon Steel Flange, 304 Hardware	CALL
	14.25-14.55	251440250-CS	IV 250 14.40" Valve Body, Carbon Steel Flange, 304 Hardware	CALL

Note: Valve body includes epoxy coated carbon steel bonnet flange and all required 304 stainless-steel installation hardware. Optional domestic stainless-steel bonnet flange available for purchase. See section 3. Optional domestic valve body hardware available for purchase. See section 5.

Continue to Step 2) Select the Insta-Valve 250 Patriot Valve Cartridge which meets your requirements on following page.



How to purchase the Insta-Valve 250 Patriot Insertion Valve

Step 2) Select the Insta-Valve 250 Patriot Valve Cartridge which meets your requirements. (Based on I.D. of pipe and open left or open right.)

4"-12" INSTA-VALVE 250 PATRIOT **OPEN LEFT** VALVE CARTRIDGES (**BLACK** Operating Nut)



Nominal Size	Valve Body ID Range	Part Number	Description	List Price
4"	3.75+	25CARTLH04-250	4" Open Left Cartridge, IV250	CALL
6"	5.75+	25CARTLH06-250	6" Open Left Cartridge, IV250	CALL
	5.45-5.75	25CARTLH06-250-U5.5	6" Open Left Cartridge, IV250 5.5 Undersized	CALL
8"	7.80+	25CARTLH08-250	8" Open Left Cartridge, IV250	CALL
	7.40-7.80	25CARTLH08-250-U7.5	8" Open Left Cartridge, IV250 7.5 Undersized	CALL
	7.40-7.80	25CARTLH08-250-U7.5-AC	8" Open Left Cartridge, IV250 7.5 Undersized AC	CALL
10"	9.70+	25CARTLH10-250	10" Open Left Cartridge, IV250	CALL
	9.40-9.70	25CARTLH10-250-U9.5	10" Open Left Cartridge, IV250 9.5 Undersized	CALL
	9.40-9.70	25CARTLH10-250-U9.5-AC	10" Open Left Cartridge, IV250 9.5 Undersized AC	CALL
12"	11.70+	25CARTLH12-250	12" Open Left Cartridge, IV250	CALL
	11.00-11.40	25CARTLH12-250-U11.1	12" Open Left Cartridge, IV250 11.1 Undersized	CALL
	11.40-11.70	25CARTLH12-250-U11.5	12" Open Left Cartridge, IV250 11.5 Undersized	CALL
	11.40-11.70	25CARTLH12-250-U11.5-AC	12" Open Left Cartridge, IV250 11.5 Undersized AC	CALL

Note: Valve cartridges include operating nut, operating nut retention nut and friction washer
 Undersized valve cartridges require the use of undersized cutters. See Hydra-Core Pipe Wall Sampling Kit operating instructions for reference.
 Undersized AC valve cartridges must be used in AC applications

4"-12" INSTA-VALVE 250 PATRIOT **OPEN RIGHT** VALVE CARTRIDGES (**RED** Operating Nut)



Nominal Size	Valve Body ID Range	Part Number	Description	List Price
4"	3.75+	25CARTRH04-250	4" Open Right Cartridge, IV250	CALL
6"	5.75+	25CARTRH06-250	6" Open Right Cartridge, IV250	CALL
	5.45-5.75	25CARTRH06-250-U5.5	6" Open Right Cartridge, IV250 5.5 Undersized	CALL
8"	7.80+	25CARTRH08-250	8" Open Right Cartridge, IV250	CALL
	7.40-7.80	25CARTRH08-250-U7.5	8" Open Right Cartridge, IV250 7.5 Undersized	CALL
	7.40-7.80	25CARTRH08-250-U7.5-AC	8" Open Right Cartridge, IV250 7.5 Undersized AC	CALL
10"	9.70+	25CARTRH10-250	10" Open Right Cartridge, IV250	CALL
	9.40-9.70	25CARTRH10-250-U9.5	10" Open Right Cartridge, IV250 9.5 Undersized	CALL
	9.40-9.70	25CARTRH10-250-U9.5-AC	10" Open Right Cartridge, IV250 9.5 Undersized AC	CALL
12"	11.70+	25CARTRH12-250	12" Open Right Cartridge, IV250	CALL
	11.00-11.40	25CARTRH12-250-U11.1	12" Open Right Cartridge, IV250 11.1 Undersized	CALL
	11.40-11.70	25CARTRH12-250-U11.5	12" Open Right Cartridge, IV250 11.5 Undersized	CALL
	11.40-11.70	25CARTRH12-250-U11.5-AC	12" Open Right Cartridge, IV250 11.5 Undersized AC	CALL

Note: Valve cartridges include operating nut, operating nut retention nut and friction washer
 Undersized valve cartridges require the use of undersized cutters. See Hydra-Core Pipe Wall Sampling Kit operating instructions for reference.
 Undersized AC valve cartridges must be used in AC applications

Continue to Step 3) Select optional Domestic Stainless Steel Bonnet Flange, if required, on following page.



How to purchase the Insta-Valve 250 Patriot Insertion Valve

Step 3) Select optional Domestic Stainless Steel Bonnet Flange, if required.

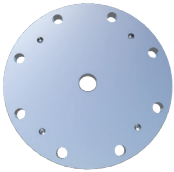
4"-12" INSTA-VALVE 250 PATRIOT OPTIONAL DOMESTIC STAINLESS STEEL BONNET FLANGE



Nominal Size	Part Number	Description	List Price
4"-8"	8IVBLFLG08-250-SS	IV250 4-8" Domestic Stainless Steel Bonnet Flange	CALL
10"-12"	8IVBLFLG12-250-SS	IV 250 10-12" Domestic Stainless Steel Bonnet Flange	CALL

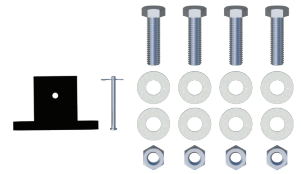
Step 4) Select optional 4-8" or 10-12" Post Hole Indicator Kit, if required.

4"-12" INSTA-VALVE 250 PATRIOT OPTIONAL POST HOLE INDICATOR KIT



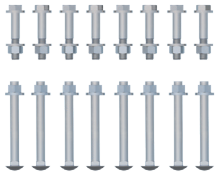
Nominal Size	Part Number	Description	List Price
4"-8"	7-PIKIT08-250	IV250 4-8" Post Hole Indicator Kit	CALL
10"-12"	7-PIKIT12-250	IV 250 10-12" Post Hole Indicator Kit	CALL

Note: Indicator Post mounting pattern compatible with Mueller UL/FM Adjustable Indicator Post. Included with Indicator Post Adaptor Kit: Drilled and tapped domestic 304 stainless steel valve bonnet, modified operating nut, stainless steel lock pin, mounting hardware (bolts, nuts and washers), and installation instructions.



Step 5) Select optional Domestic Hardware if required.

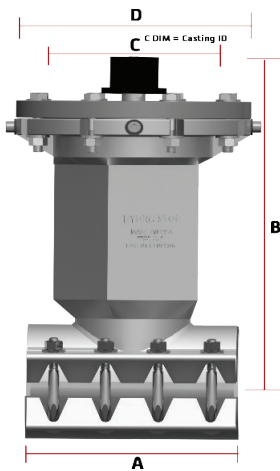
4"-12" INSTA-VALVE 250 PATRIOT OPTIONAL DOMESTIC STAINLESS STEEL HARDWARE



Nominal Size	Part Number	Description	List Price
4"-8"	8B-PACK304SS-HW-48-DOM	IV250 4-8" Domestic Stainless Steel Hardware	CALL
10"-12"	8B-PACK304SS-HW-1012-DOM	IV 250 10-12" Domestic Stainless Steel Hardware	CALL

Note: Domestic stainless steel hardware upgrade is required to meet American Iron and Steel, Made in USA and Buy America requirements. All Insta-Valve 250 Patriot insertion valves meet Buy American requirements.

Step 6) Place your order.



Weights and Dims					
Size	A	B	C	D	Approx. Weight
4"	12"	18.6	8.4	13.5	138 lbs
6"	12"	21.5	8.4	13.5	173 lbs
8"	16"	24.6	8.4	13.5	229 lbs
10"	24	30	17	19	370 lbs
12"	24	33	17	19	425 lbs

Other Specifications

Valve Body Minimum Test Pressure: 1.5 times system working pressure

Valve Body Maximum Test Pressure: 375 psi, Maximum Working Pressure: 250 psi

Proprietary Information: This property of Hydra-Stop shall not be used, reproduced or distributed without written consent. All design and invention rights are reserved. covered by United States Patent No. 9,829,141,B2 and United States Patent No. 9,644,779,B2. Additional Patents Pending.

