



DISCOVER THE **HSF 250**®

RELIABILITY + STRENGTH + QUALITY

4- 12" Heavy Duty Line Stop Fitting



HSF 250 LINE STOP FITTINGS

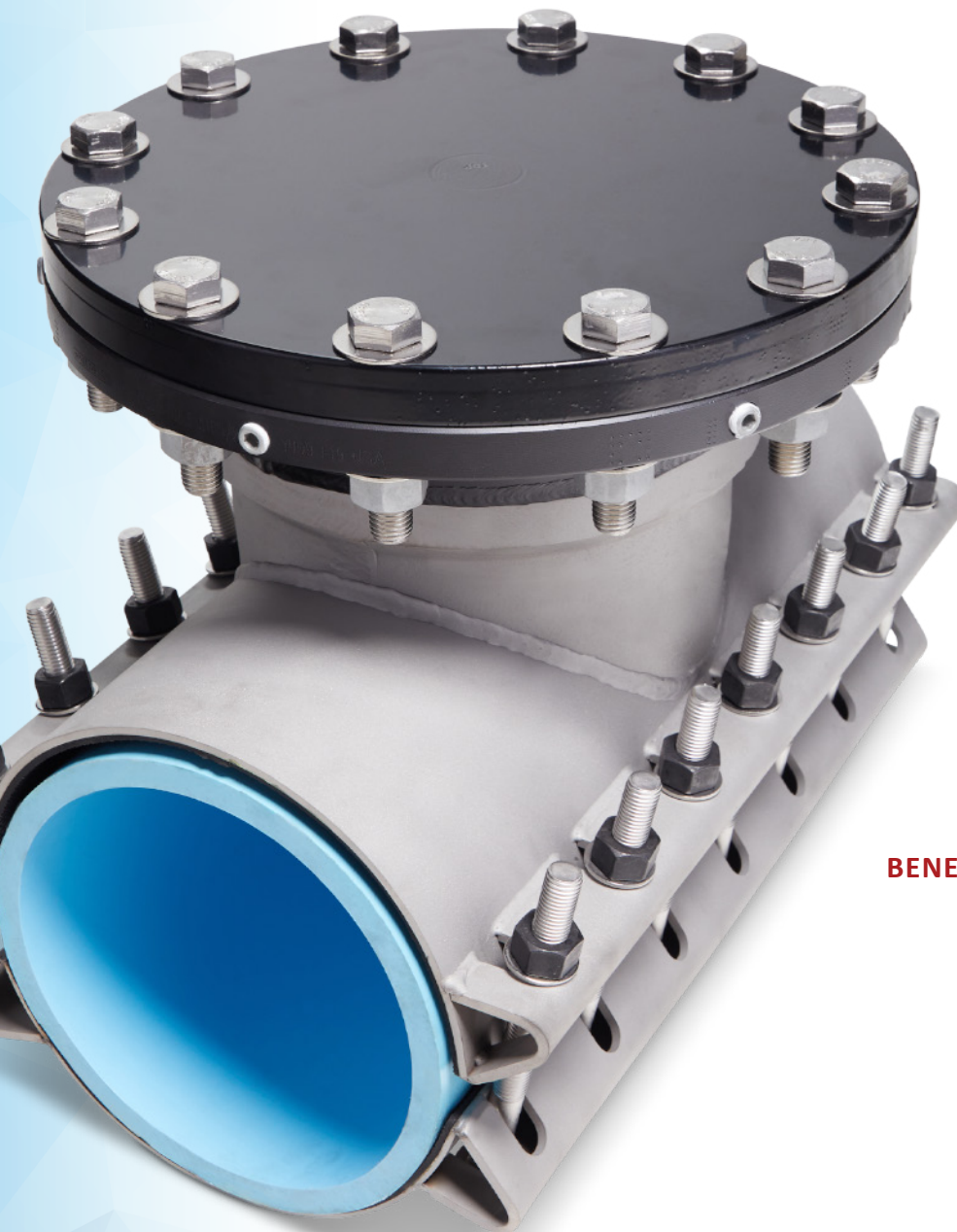
When specifying your next line stop fitting, specify the HSF 250 Line Stop Fitting. The HSF 250 is the **ONLY** line stop fitting which offers all the following features as standard:

FEATURES

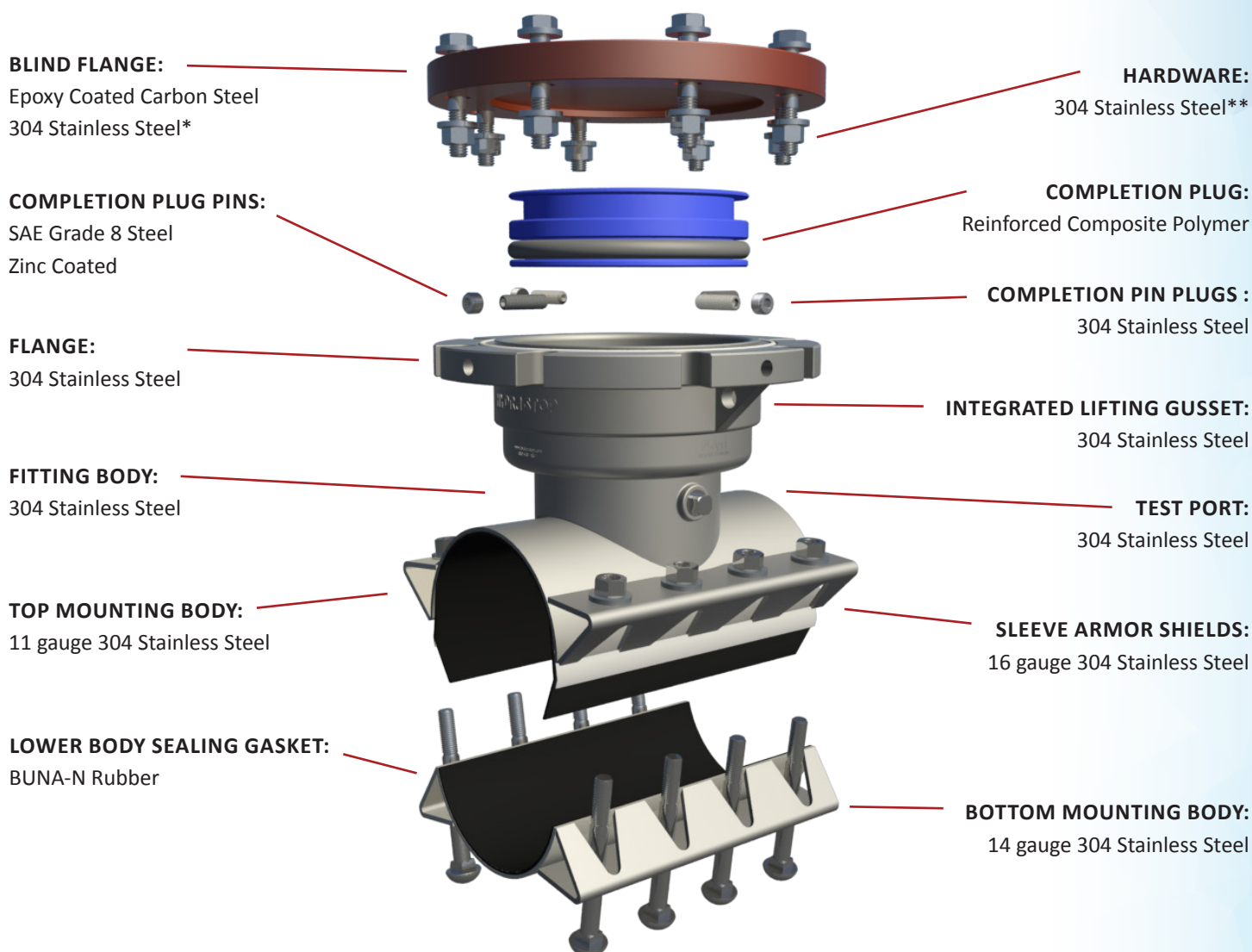
- 250 psi working pressure
- Requires no system shutdown
- Eliminates 100 percent of the costs related to shutting down a system
- Maintains NSF 61 and ANSI 372 certification by UL
- Stainless steel construction
- Can be installed on all common pipe types
- No need to ream or sever the pipe, only a single tap needed for installation
- "Push-and-pin" completion plug
- AIS-compliant option available

BENEFITS

- Increased installation opportunities
- Quality assurance
- Improved delivery
- Trouble free installation
- Emergency management
- Adaptor flange elimination
- Elimination of cross-threading
- Simplified re-stopping and elimination of "dry runs"
- Reduced installation time
- Warranty protection



HSF 250 MATERIALS



HSF DESIGN FEATURES

- **Factory Pressure Test:** Each HSF 250 is pressure tested and serialized for traceability before leaving our manufacturing facility.
- **Integrated Lifting Gussets:** Incorporated to eliminate handling and safety concerns.
- **HSF 250 Test and Working Pressures:** 375 psi test pressure max. 250 psi working pressure.
- **Welds:** Welds fully passivated for improved corrosion resistance.
- **Flange:** The HSF 250 flange is engineered to operate with Hydra-Stopper installation equipment, reduces installation time, and eliminates the need for an adaptor flange.

HSF 250 Patriot: AIS Compliant

The HSF 250 Line Stop Fitting is manufactured in the USA. Meets American Iron and Steel Requirement (Public Law 113-76) and fulfills requirements specified in additional "Buy American" legislation. Meets "Made in USA" and "Buy America" requirements with the additional purchase of stainless steel domestic hardware. **When the project calls for meeting AIS requirements, specify the HSF250 Line Stop Fitting.**

*Domestic Stainless Steel Bonnet available at additional cost.

** Domestic Stainless Steel Hardware available at additional cost.



VISIT US

www.hydra-stop.com



EMAIL US

contact_us@hydra-stop.com



CALL US

P: 708-389-5111

F: 708-389-5125



FIND US

144 Tower Drive Suite A
Burr Ridge, IL 60527



CONNECT WITH US



Hydra-Stop



@HydraStop



@HydraStop



@HydraStop