

Hydra-Stop Indicator Post Adapter

Installation Instructions

HS_IPA_WRK v1.0 Revised March 2017
Specifications subject to change without notice.



HYDRA-STOP[®]

Line Tapping Line Stopping Valve Insertion

144 Tower Drive Burr Ridge, IL 60527 (800) 538-7867
www.hydra-stop.com

Hydra-Power Indicator Post Adapter

Installation Instructions



Have questions or need assistance?

WE ARE HERE TO HELP!

Visit our website:

www.hydra-stop.com

for more info:

- Product Info & Updates
- Tech Bulletins
- Frequently Asked Questions

– or –

Call Hydra-Stop Inside Sales

1-800-538-7867

Hydra-Power Indicator Post Adapter



Installation Instructions

I. Material List

a. Materials included in 4-8 Indicator Post Kit:

i. (1) 8in Stainless Steel Blind Flange – modified for Indicator Post attachment (Fig. 1)



Figure 1

ii. (8) 5/8" Stainless Steel Washer (Fig 2)



Figure 2

iii. (1) Modified Operating Nut (Fig 3)



Figure 3

iv. (1) Stainless Steel Industrial lock pin (Fig 4)



Figure 4

b. Materials included in 10-12 Indicator post Kit:

i. (1) 12 inch Stainless Steel Blind Flange – modified for Indicator attachment (Fig 5)

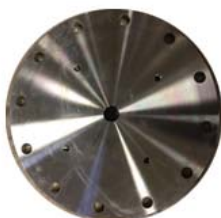


Figure 5

ii. (8) 5/8" Stainless Steel Washer (See Fig 2)

iii. (1) Modified Operating Nut (See Fig 3)

iv. (1) Stainless Steel Industrial lock pin (See Fig 4)

c. Materials required & included with Indicator post

i. (4) 5/8-11 x 2 1/4" Bolts (See Figure 6)

ii. (4) 5/8-11 Nuts

iii. Indicator Post Assembly



Figure 6

Hydra-Power Indicator Post Adapter



Installation Instructions

II. Tool List For Installation of Indicator Post Installation:

Standard tool set for indicator post hardware

1-1/8 Open End Wrench for Indicator Post Bell Housing and Height Adjustment Bolts



Additionally:

Flange Bolt Hardware Wrenches:

4-8 IV:



1-1/16 Open End Wrench



15/16 Open End Wrench

10-12 IV:

1-5/16 Open End Wrench



1-7/16 Open End Wrench



Indicator post attachment bolt Wrench: 15/16"



III. Installation Procedure

Step 1: Install 4-12 Insta-Valve according to 4-12 Insta-Valve Installation Instructions. (See Fig. 7)



Figure 7

Step 2: Instead of installing an epoxy coated blind flange, install a stainless steel blind flange with the four 5/8-11 threaded blind holes. Tighten blind flange down to create seal using the cross-tightening pattern described in the installation instructions.

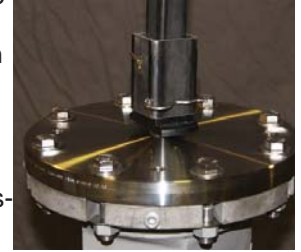


Figure 8

Step 3: Remove the lower stem of the indicator post and allow the Coupling to drop down over the Insta-valve operating nut. Attach the Coupling to the operating nut with the Cotter Pin provided with the indicator post or for faster installation, with the stainless-steel Lock Pin provided with the kit. (See Fig. 8)

Step 4: Slide the indicator post Bell over the lower stem and onto the Insta-Valve blind flange. (See Fig. 9)



Figure 9

Thread the 5/8 nuts completely onto the 5/8-11 bolts that come with the Indicator post and place two 5/8" washers between the bottom bell surface and the stainless-steel blind flange centered on each of the four blind flange/bell holes. Then thread the 5/8 bolts with nuts through the bell and double washers and into the four 5/8-11 threaded blind flange holes. (See Fig. 10)

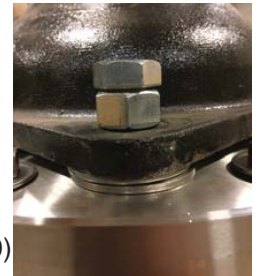


Figure 10

NOTE: If the bolts don't tighten completely, tighten the nuts down to the top of the indicator post bell surface for a secure attachment.

Step 5: Once the bell and coupling are secured, the indicator post may be installed per the indicator post manufacturer's instructions.

NOTE: For 10-12 inch sizes or in abnormal circumstances, a longer operating handle may be preferred to fully seat the Insta-Valve.

Completed Indicator Post Installation

